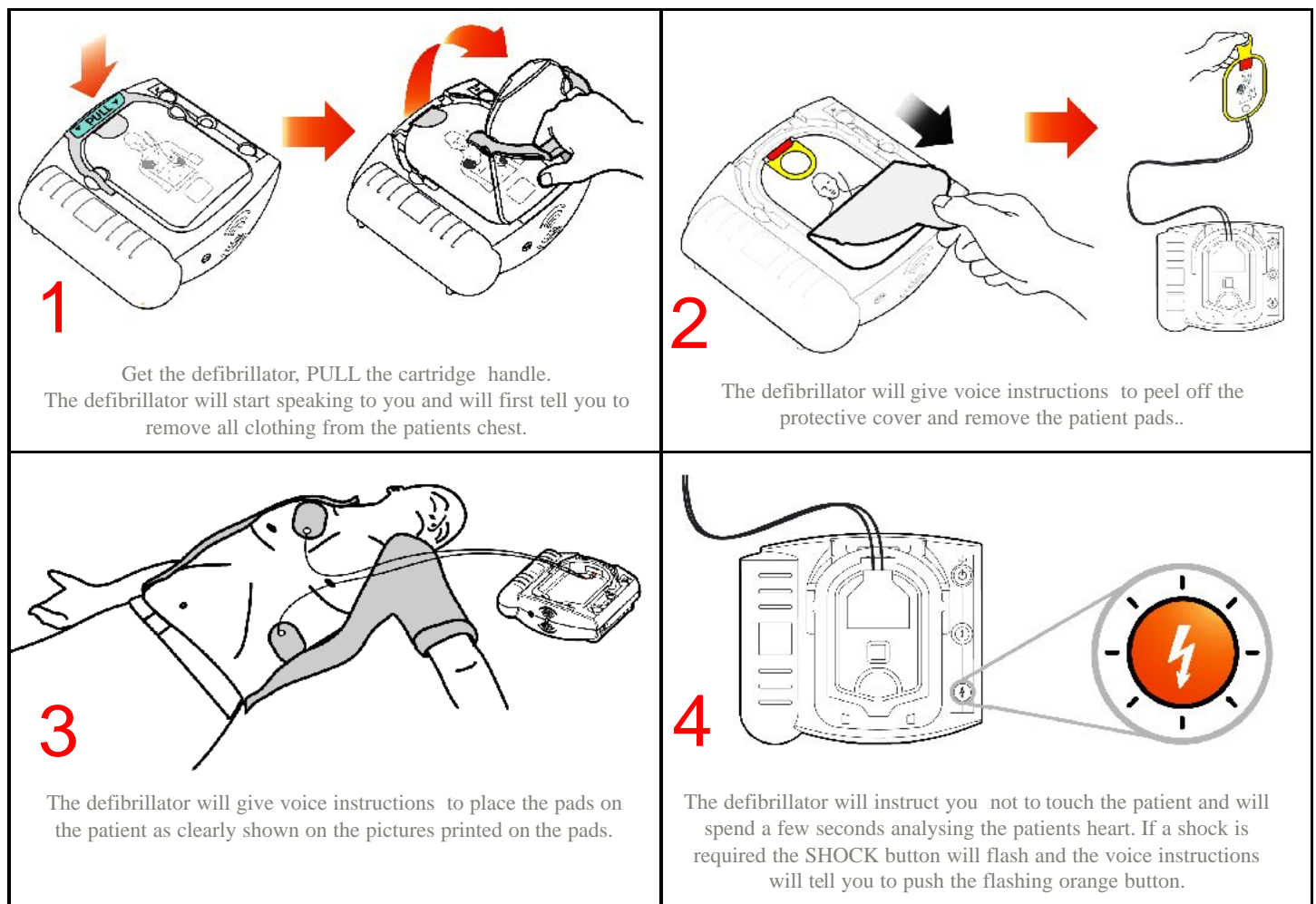


If someone collapses and is UNRESPONSIVE and NOT BREATHING PROPERLY you must first call the emergency services (999). If possible delegate someone else to call the emergency services.
Get your Philips HeartStart Defibrillator and follow these steps:



The defibrillator will continue to monitor the patients heart and will give voice instructions telling you what actions to take next. If additional shocks are required it will advise you to press the orange flashing SHOCK button. If cardio pulmonary resuscitation (CPR) is required it will provide voice instructions on how to give effective CPR. The defibrillator should remain attached to the patient until the emergency services arrive.

THE USE OF A DEFIBRILLATOR DOES NOT GUARANTEE SURVIVAL OF THE PATIENT. IT MAY NOT BE POSSIBLE TO RESUSCITATE THE PATIENT FOR A NUMBER OF REASONS.